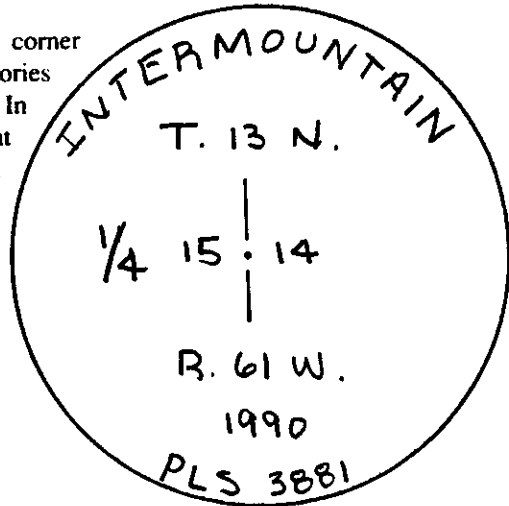


# Wyoming Certified Land Corner Recordation Certificate

This form is to be completed in accordance with W.S. 36-11-101, printed in black ink or typed, and shall be for one individual corner.

Describe below, or show in sketch attached to this form, the corner evidence found. Include condition and type of monument, accessories and ties. Describe any maintenance or rehabilitation performed. In the circle to the right, show monument inscription. If monument is determined lost or obliterated, restate the GLO or BLM original field note record; describe or show the procedure used to reestablish the corner and all data as above for a found monument.



1990 JUN 13 PM 4 27

071299  
LARAMIE COUNTY  
CHEYENNE, WY.

Field Date 5/10/90 Office Reference # 2035

EVIDENCE FOUND. - NOTHING  
(REMAINS OF OLD FENCE LINE  
RUNNING WEST)

POSITION DETERMINED BY SINGLE PROPORTION FROM ADJACENT SECTION CORNERS.

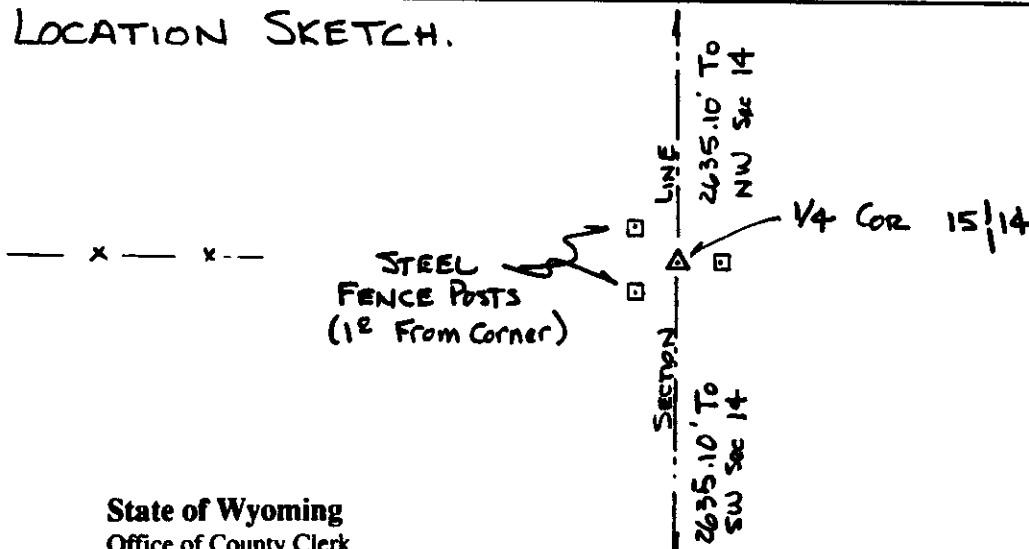
Monument Inscription

GLO RECORD. - 16" x 8" x 5" LIMESTONE

MONUMENT SET - 3" ALUM. CAP. STAMPED AS SHOWN. SET ON 30" x 2 1/2" ALUMINUM PIPE. - CAP 1 FOOT ABOVE GROUND, DROVE 3 STEEL FENCE POSTS AROUND CORNER - 1<sup>st</sup> NW, 1<sup>st</sup> SW & 1<sup>st</sup> E.

REFERENCE POINTS SET - NONE - SURROUNDING GROUND IS ALL UNDER CULTIVATION. TIED TO SECTION CORNERS TO NORTH & SOUTH.

## LOCATION SKETCH.



State of Wyoming

Office of County Clerk

County of LARAMIE

This Certified Land Corner Recordation Certificate was filed for record on the \_\_\_\_\_ day of \_\_\_\_\_, 19\_\_\_\_, in Book No. T 13 N, R 61 W, on Alpha-Numeric coordinates L-17 and was noted on the Cross Index Plat.

County Clerk

Corner Type:

Aliquot Corner  Other

Section(s) 15 | 14

Meridian 6<sup>TH</sup> P.M.

Corner Name 1/4 Corner

Township 13 N.

Range 61 W. Page \_\_\_\_\_

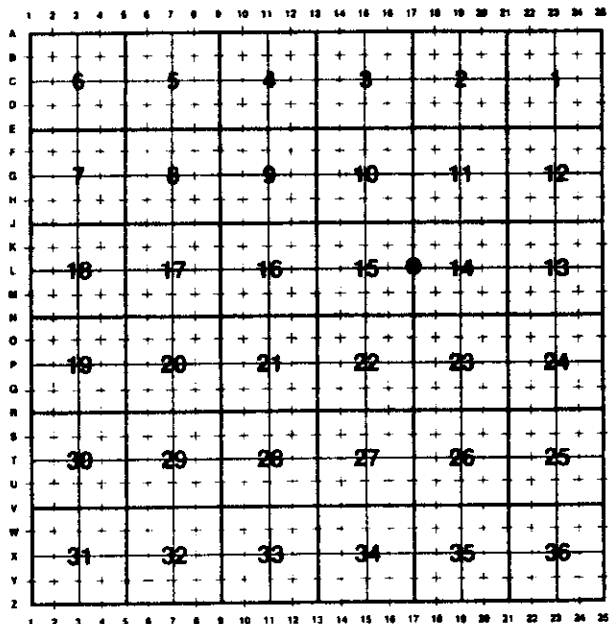
Sheet \_\_\_\_\_ of \_\_\_\_\_

**Directions for using the Cross Index Plat**

Section, quarter and sixteenth corners will be marked with a dot at the corner location. The alpha-numeric coordinate number is then determined for the intersection of the two lines. A corner that applies to two or more townships shall be filed under all that apply by the use of photo copies.

Closing corners will be indexed under the township in which they control ownership. For 1/64, 1/256, 1/1024 and non-aliquot corners lying between grid designations, mark the appropriate grid area with a dot and use the index code to the north and west (local systems may be used if the method is approved by the County Surveyor or Clerk and a written description of its use is filed in the front of each book of certificates).

**Cross Index Plat**

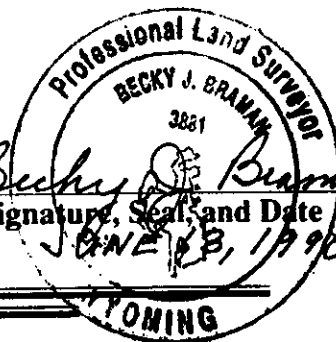


**State Plane Coordinates (optional)**

Zone  W  WC  EC  E feet/meters  
 NAD 1927  NGVD 1929  NAD 1983  NAVD 1988  
 North (Y) = \_\_\_\_\_ East (X) = \_\_\_\_\_ EL = \_\_\_\_\_  
 Latitude \_\_\_\_\_ Longitude \_\_\_\_\_  
 Scale Factor \_\_\_\_\_ Geoid Height \_\_\_\_\_

**Certification**

I, BECKY J. BRAMAN, Wyoming PLS-~~PLS~~ 3881 certify that I, or others under my supervision, have performed the work as described above and completed this form.  
 Company or Agency INTERMOUNTAIN PROFESSIONAL SERVICES, INC.  
 Mailing Address 1816 CENTRAL AVENUE  
 Street Address \_\_\_\_\_  
 City, State, ZIP CHEYENNE, WYOMING 82001  
 Telephone, FAX PH: (307) 632-3583 FAX (307) 632-3194



Sheet 1 of 1